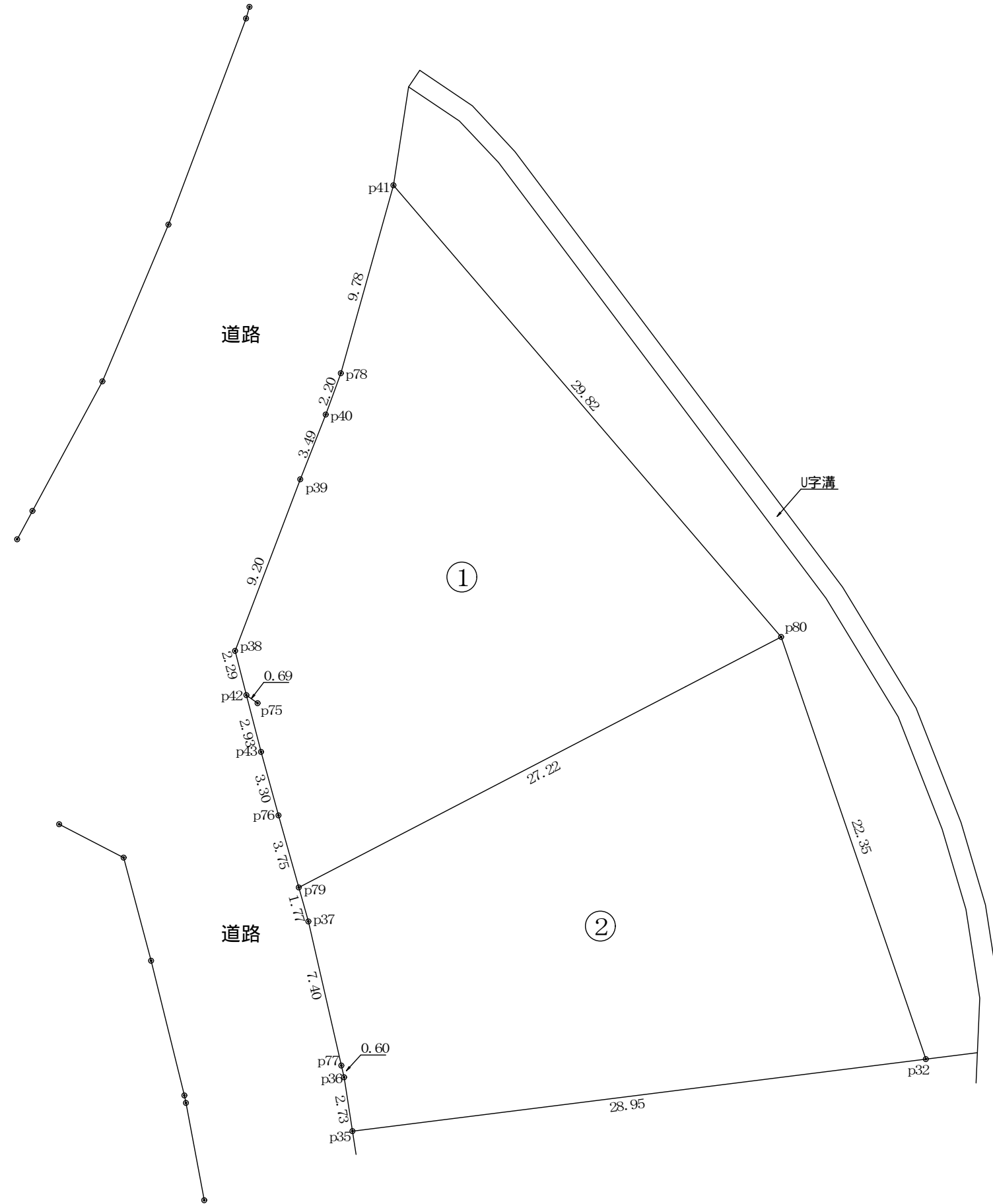


求積図 S=1 : 250



求積表

地番	①				
NO	X _n	Y _n	Y _{n+1} - Y _{n-1}	X _n (Y _{n+1} - Y _{n-1})	
p80	43607.216	-75347.493	-14.485	-631650.523760	
p41	43629.952	-75366.788	-21.982	-959073.604864	
p78	43620.553	-75369.475	-3.454	-150665.390062	
p40	43618.488	-75370.242	-2.062	-89941.322256	
p39	43615.252	-75371.537	-4.606	-200891.850712	
p38	43606.668	-75374.848	-2.759	-120310.797012	
p42	43604.448	-75374.296	1.270	55377.648960	
p43	43601.604	-75373.578	1.575	68672.526300	
p76	43598.417	-75372.721	1.854	80831.465118	
p79	43594.804	-75371.724	16.128	703096.998912	
p82	43602.554	-75356.593	19.421	846805.201234	
p81	43604.751	-75352.303	9.100	396803.234100	
合計				-946.414042	
合計面積				473.2070210	
地積				473.20	m ²

地番	②				
NO	X _n	Y _n	Y _{n+1} - Y _{n-1}	X _n (Y _{n+1} - Y _{n-1})	
p80	43607.216	-75347.493	-6.814	-297139.569824	
p81	43604.751	-75352.303	-9.100	-396803.234100	
p82	43602.554	-75356.593	-19.421	-846805.201234	
p79	43594.804	-75371.724	-14.660	-639099.826640	
p37	43593.097	-75371.253	2.082	90760.827954	
p77	43585.871	-75369.642	1.742	75926.587282	
p36	43585.285	-75369.511	0.536	23361.712760	
p35	43582.581	-75369.106	29.150	1270432.236150	
p32	43586.028	-75340.361	24.856	1083374.311968	
p31	43597.582	-75344.250	-5.128	-223568.400496	
p83	43601.262	-75345.489	-3.243	-141398.892666	
合計				-959.448846	
合計面積				479.7244230	
地積				479.72	m ²